

Exhibition Proposal for Triton Museum of Art

To: Curatorial Team
Preston Metcalf, Executive Director & Senior Curator

From: Kent Manske
kent.manske@preneo.org
650-454-4570

Date: September 6, 2021

Exhibition Concept

A solo exhibition for Bay Area artist, art educator and community arts advocate, Kent Manske. Manske's work acts as a conceptual bridge between the natural world and the built environment. It references scientific study, the cosmos, and animal and plant biology down to the cellular level. The organisms created are highly detailed inventions arranged in organically designed, mutable environments. Large scale print installations, original prints, artist books and new works.

Artist Statement

Inquiry and introspection about the interconnectedness of things drives my need to create. Processing thoughts, ideas and observations is the nature of my studio activity. Through the creation of images, symbols and visual narratives I explore my being and belongingness. This investigation helps me access my own truths and facilitates my understanding of the world in a broader context.

I am interested in visual language development including its construction, intentionality, ambiguity, contradictions, translation and interpretation. My works function as conscious maps, providing visual routes for evolving ideas, advancing understanding and constructing meaning. Each mark metaphorically documents a thought experience, comments on an inquiry or reveals a process of thinking. Meaning evolves and diversifies over time.

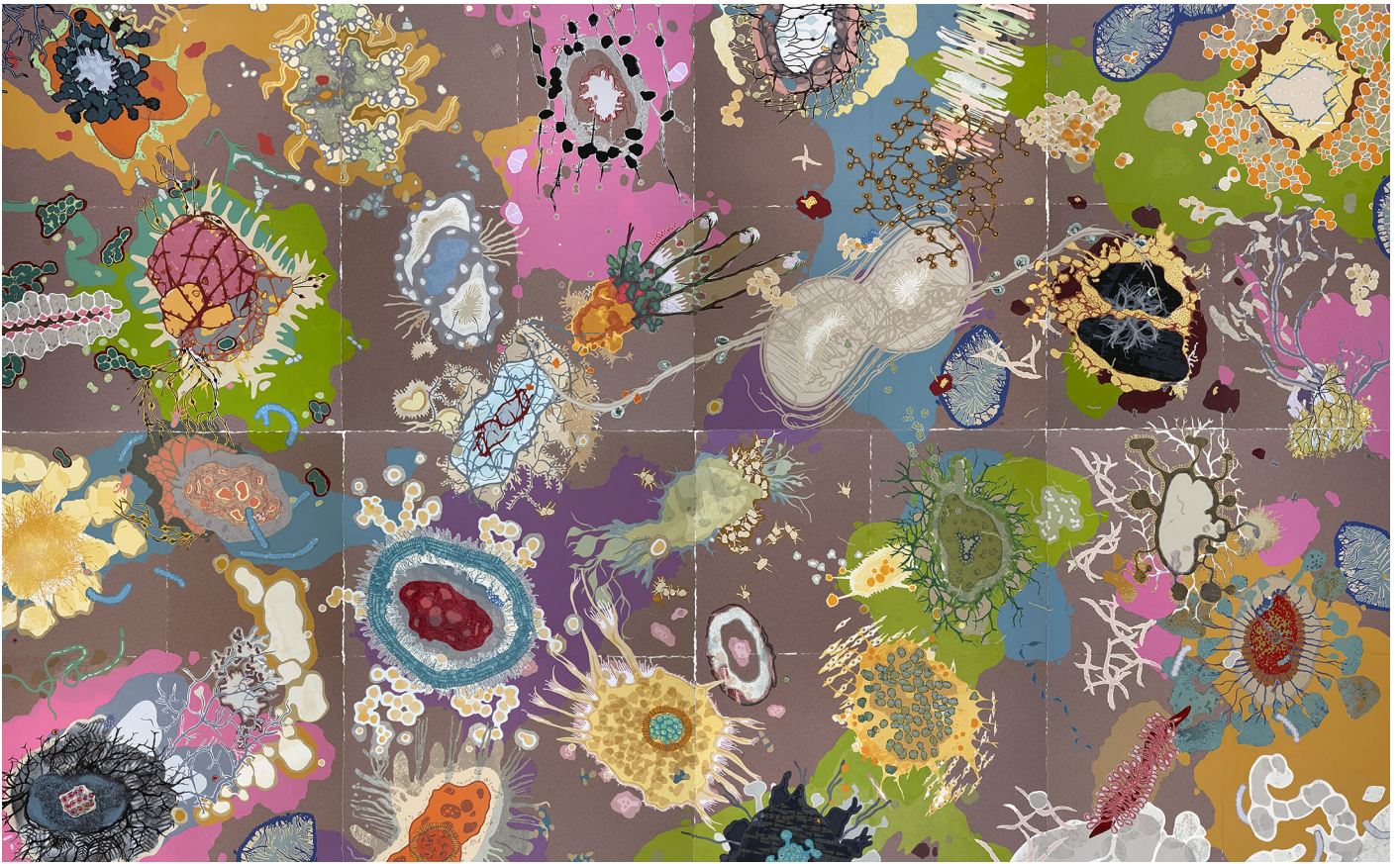
Printmaking processes serve the conceptual development of my images and satisfy my passion for working with materials. I use screen printing to make one-of-a-kind prints that evolve through the loosely planned yet complex layering of ink and color. This process welcomes serendipitous results and uses unintended consequences as opportunity. I do not hesitate to hand-cut an intricate stencil, or make a photo-stencil, with plans to use it only once. Prepared stencils are sometimes employed again to evolve another work-in-progress or create a foundation layer for a new print. Completed works are realized as original prints and artist books.

CV

[Resume](#)

Image List

Weave
Nests
Specimens
Genetic Garden III: Cells 1 - 56
Corpus Animare
You are the Tree

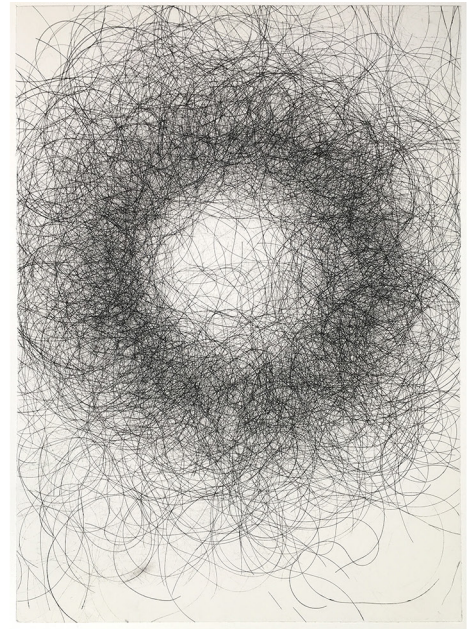
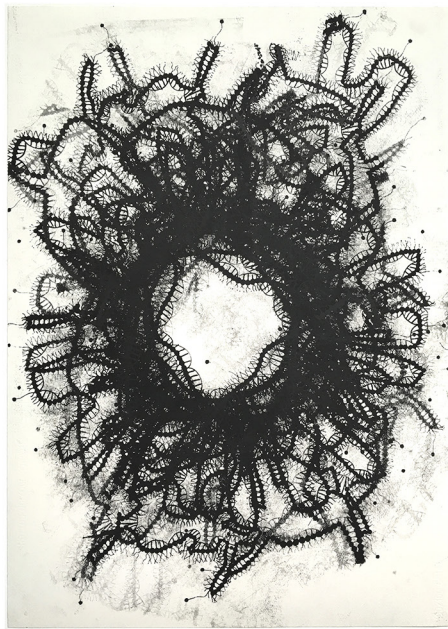


Weave

8' high x 12' wide

Print collage on handmade paper. Screen-based monoprinting, monoprinting and chine collé.

2020



Nests

30 x 22 inches each

Screen-based monoprints

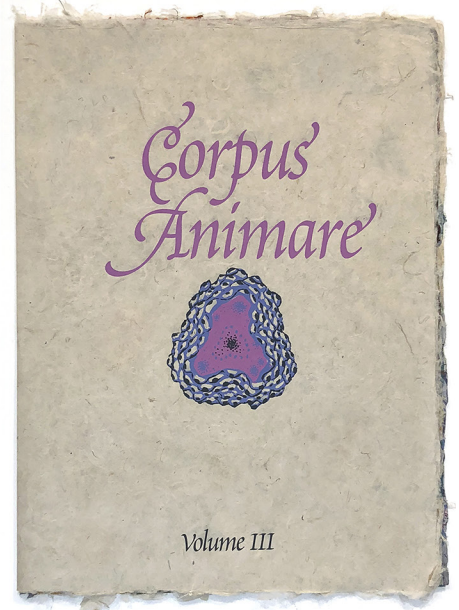
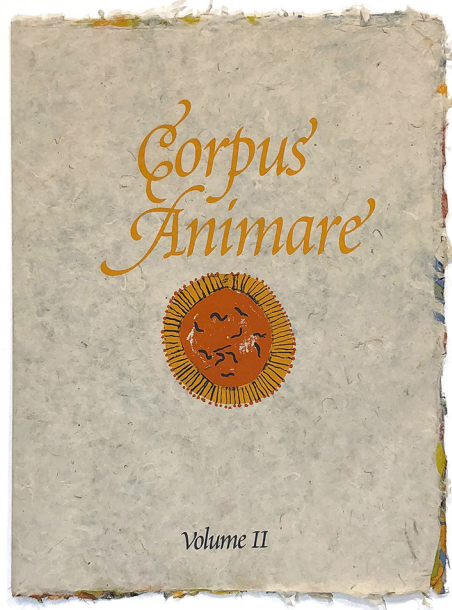
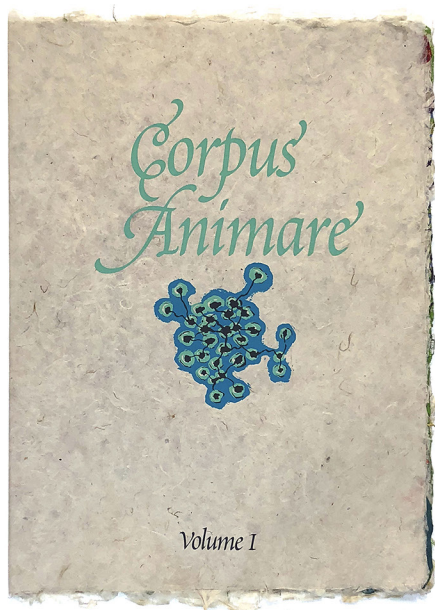
2011 - 2018



[Specimens](#), current work in progress
8 feet high x 12 feet wide
Print collages, screen-based monoprinting
2021



[Genetic Garden III](#), Cells 1 - 56
10' high x 32' wide x 2"
Screen-based monoprints mounted on 21" aluminum disks
2021

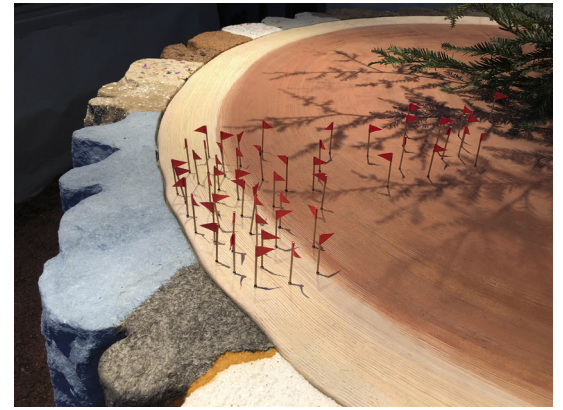


[Corpus Animare](#)

Artist books. 12 pages each. Screenprinting, screen-based monoprinting on handmade Nepalese lokta paper.

22 x 17 inches (closed)

2018



[You are the Tree](#)

Paper pulp sculpture from locally sourced craft industry byproducts. Collaboration with Nanette Wylde.

7 feet diameter

2020